

Illinois Drought Monitoring & Collaboration



TRENT FORD

ILLINOIS STATE CLIMATOLOGIST

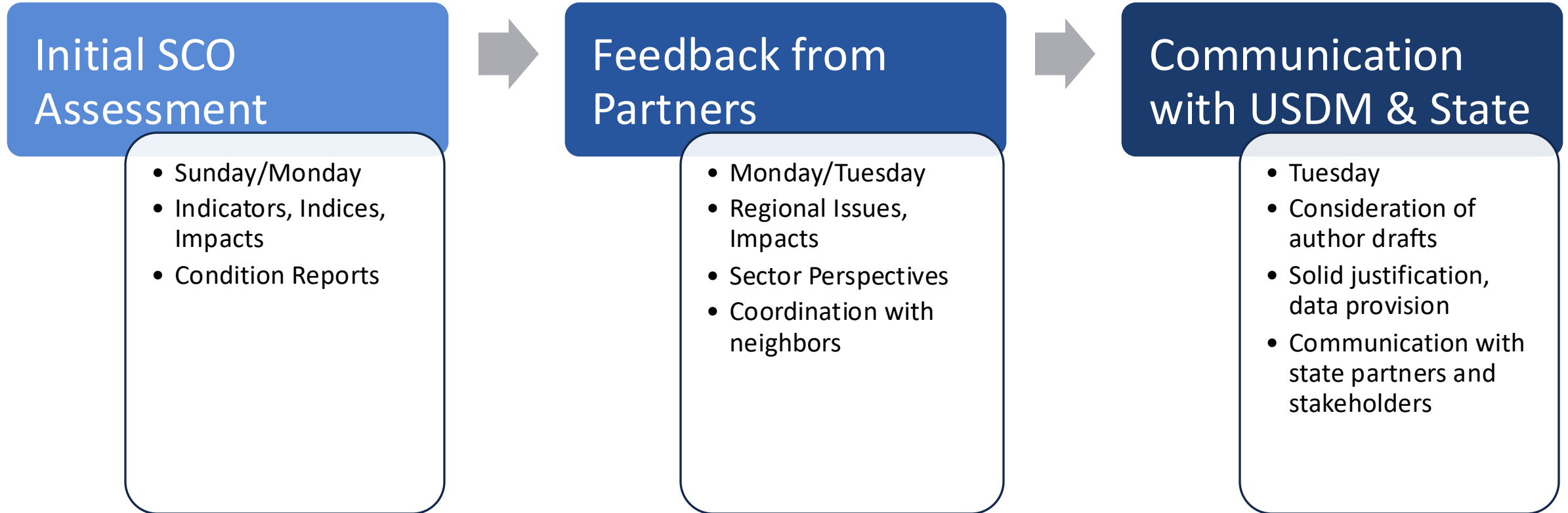
UNIVERSITY OF ILLINOIS, URBANA-CHAMPAIGN

I ILLINOIS

Illinois State Water Survey

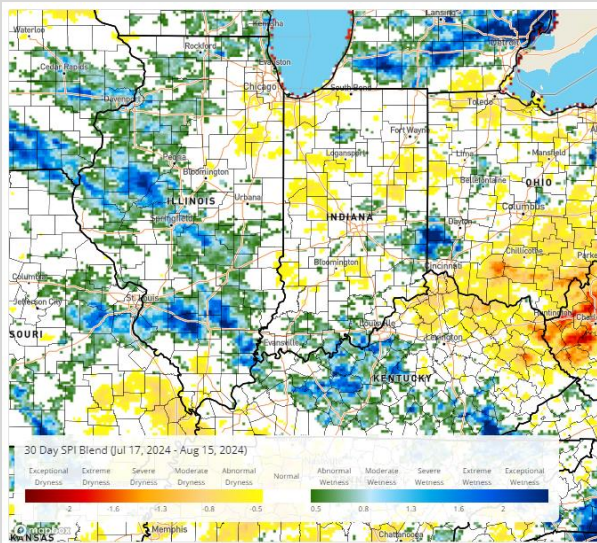
PRAIRIE RESEARCH INSTITUTE

The Illinois Drought Assessment Process



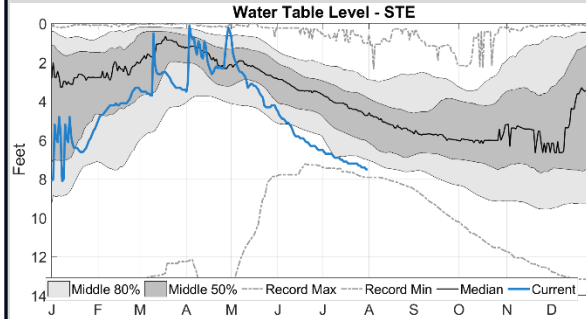
The Data

METEOROLOGICAL

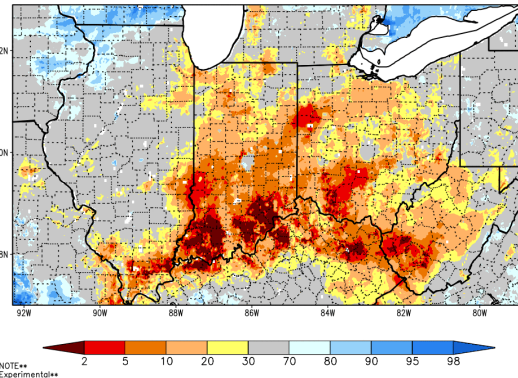


Precipitation & ET/PET

AGRICULTURAL & ECOLOGICAL

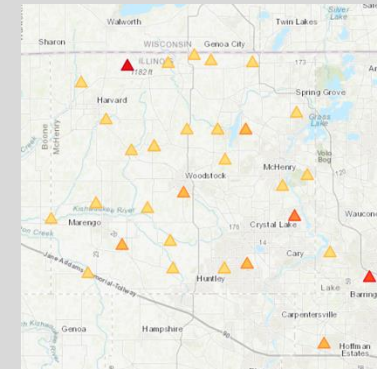
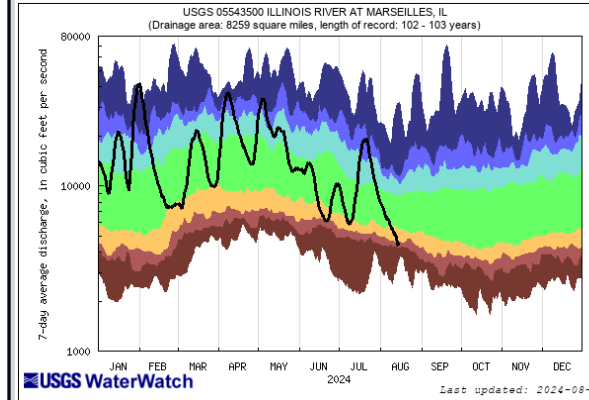


SPoRT-LIS 0-100 cm Soil Moisture percentile valid 16 Aug 2024



Soil moisture & Crop/Veg conditions

HYDROLOGIC



Streamflow & Groundwater

SOCIOECONOMIC

In deep drought, some Illinois towns are turning to water limits

Staff Writer Rockford Register Star
Published 12:01 a.m. CT July 28, 2012 | Updated 1:14 a.m. CT July 28, 2012

Burn Bans in the Quad Cities, surrounding areas



Rock Island County Burn Bans

Condition and impact reports



Partners

- NWS – All 5 offices contribute substantially
- Regional experts – USDA, NOAA, NIDIS
- State Agencies – IEMA, IEPA, IDNR
- Drought/hydrology experts – UIUC, SIU, NIU, Northwestern, Extension
- NGOs working in drought, water, ecology – Morton Arb, PRN, Farm Bureau



Moving Forward – Solidifying the Process

- Drought Plan update expected in next 3 years

Goals:

- Better indicators, more recent data, more specific water supply planning information
- More input and participation from state agencies
- Recognition of changing drought conditions, projections of future changes
- Clearer plan of action – who's doing what and when?

