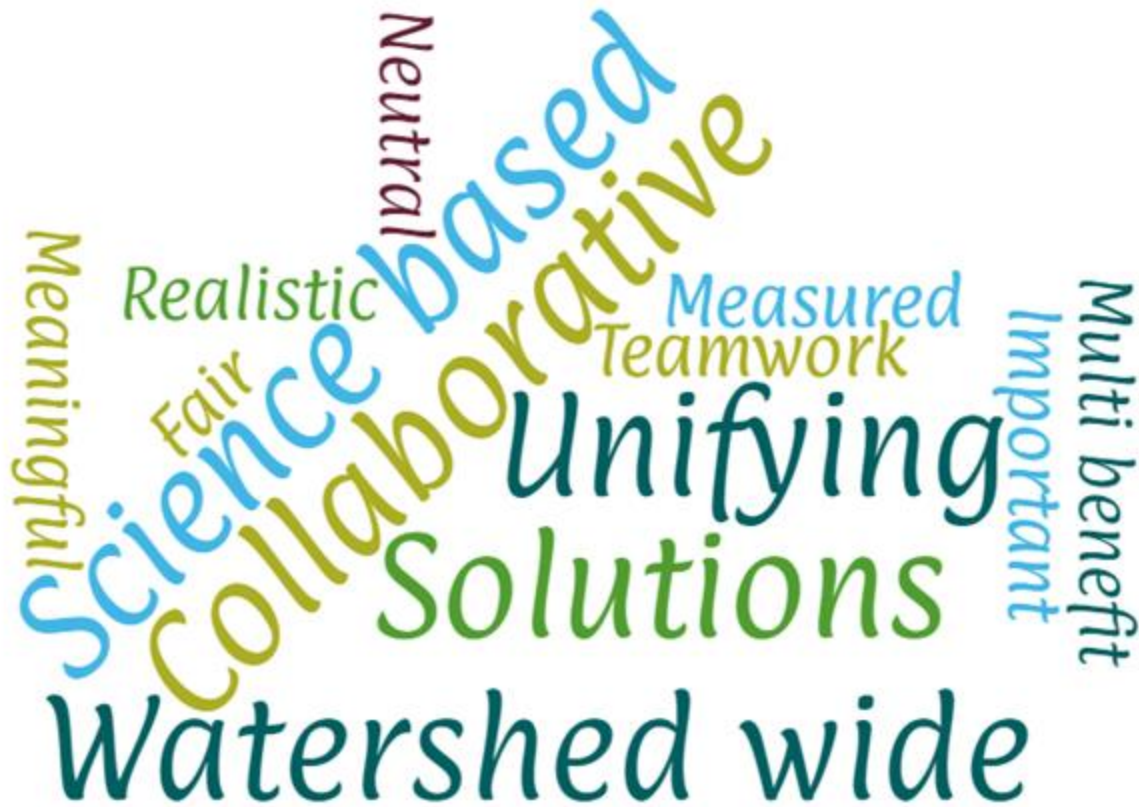


Mississippi River Watershed Partnership

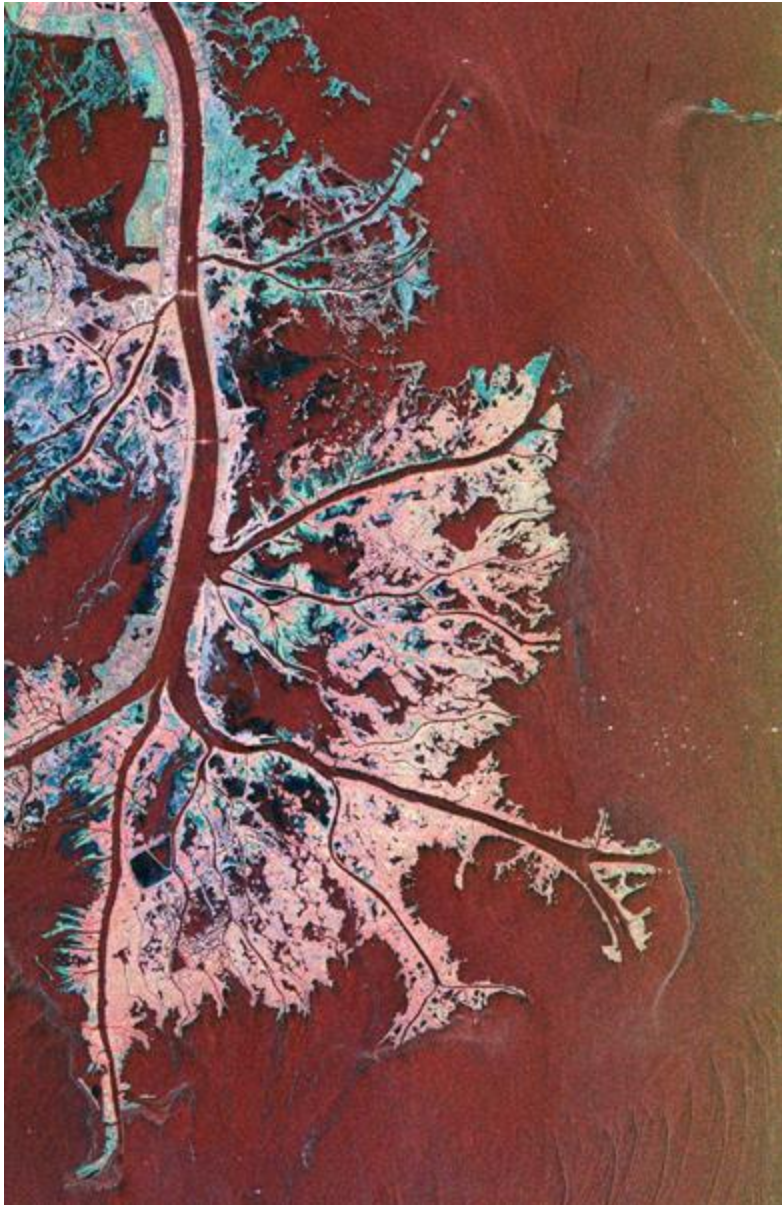
Aug 20, 2024



AMERICA'S WATERSHED INITIATIVE



- Non-profit organization representing all major sectors and the entire Mississippi River watershed
- Champion sound science to inform decision making
- Foster dialogue, and build coalitions to promote solutions



Goals

- Reduce nitrogen and phosphorus loading to the Gulf of Mexico by 20% by 2025 and 40% by 2035
- Protect and restore 2 million acres of floodplains by 2030

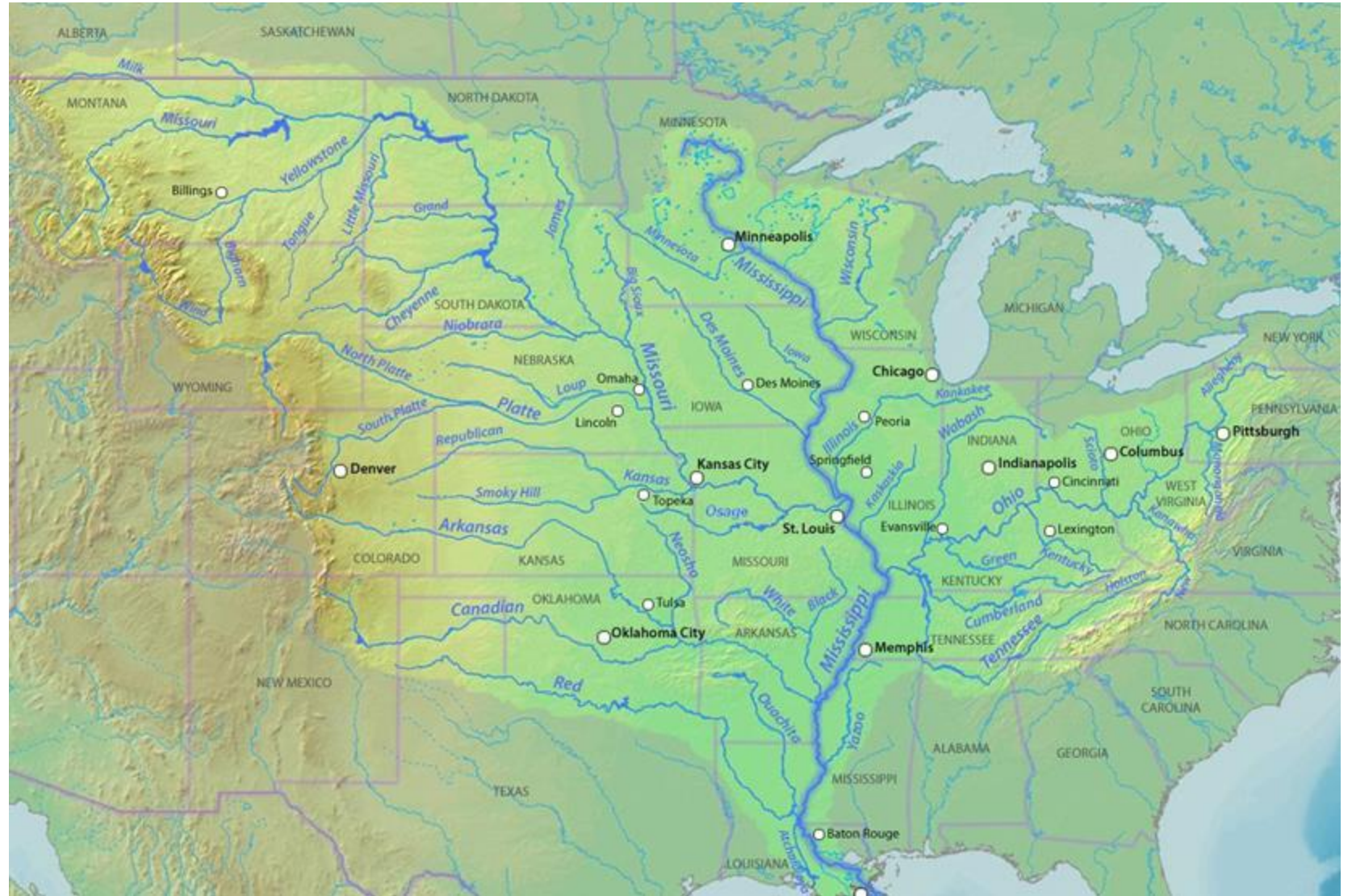
How:

- Protecting and restoring floodplains at scale
- Leading and coordinating basin-wide government relations work
- Developing science-based tools

Who

- State Chapters with staff working on water issues in every state across the Mississippi River Basin
- Shared leadership team for our Mississippi River Basin Program with expertise in science, floodplains, conservation, and government relations
- Extensive network of partners – local, state and federal government, NGOs and corporate entities

Need for a Mississippi River Watershed Partnership



WHAT IS OUR END GOAL?

- To explore how a **broad cross-sector partnership**, that **builds upon existing initiatives** through integrated action, can improve the environmental and economic health of the watershed
- This process will work to create consensus around the:
 - benefits of a basinwide structure
 - set of shared goals spanning water quality, flood and droughts, inland navigation, fish and wildlife resources and recreation



WHAT WILL BE BETTER WITH THIS COLLABORATION IN PLACE?

- Ability to assess and achieve multiple benefits from programs and projects
- More efficient and effective spending
- Better data informed decision making through filling data gaps, increasing accessibility of this information and improved continuity across data sets





FEDERAL ENGAGEMENT

Council on Environmental Quality

Department of Agriculture

- Natural Resources Conservation Service

Department of Commerce

- National Oceanic and Atmospheric Administration

Department of Homeland Security

- Federal Emergency Management Agency

Department of Housing and Urban Development

Department of the Interior

- US Fish and Wildlife Service
- US Geological Survey
- Bureau of Reclamation

Department of Transportation

Environmental Protection Agency

US Army Corps of Engineers



MULTI-STATE ALLIANCES BRIEFED

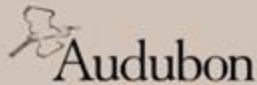
- Lower Mississippi River Conservation Committee
- Mississippi Interstate Cooperative Resource Association
- Mississippi River Cities and Towns Initiative
- Mississippi River Restoration Resiliency Initiative
- Missouri River Basin Interagency Roundtable
- National Corn Growers Association Action Teams
- Ohio River Basin Alliance
- Red River Valley Association
- Upper Mississippi River Basin Association
- Upper Mississippi River Conservation Committee

Mississippi River Watershed Partnership Workshop

Conference Planning Committee:



Consulting Partners:



JUNE 25-27, ST. LOUIS, MO

125 ATTENDEES

Attendees came from:

- 22 states
- 8 Federal agencies including
- 10 State Agencies
- National and Local NGOs
- Industry
- Agriculture
- Navigation

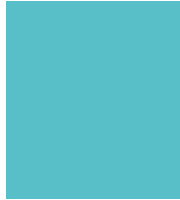
- Who was missing?



FOCUS OF WORKSHOP

- Leadership Issues facing the watershed
- Exploring goals areas – water quality, flood and drought resilience, navigation, fish and wildlife resources, recreation
- Options for moving a Mississippi River Watershed Partnership forward





MULTI-STATE ALLIANCE LEADERSHIP

- Upper Mississippi River Basin Association
- Ohio River Basin Alliance
- Missouri River Basin Interagency Roundtable
- Lower Mississippi River Conservation Committee
- Red River Valley Association

KEYNOTE SPEAKERS



Mayor Phil Stang, Kimmswick, MO,
MRCTI MO Chair



Mr. Jamie A. Pinkham, Principal
Deputy Assistant Secretary of the
Army for Civil Works



Mr. Robert Bonnie, Undersecretary
for Farm Production and
Conservation, U.S. Department of
Agriculture



BG Peter "Duke" DeLuca, President,
ACULED Global Consulting and
Former Commander MVD

WHAT WE HEARD

- Power of collaboration at all scales was evident
- There is tremendous knowledge and power in existing institutions
- A desire to move forward now, but with specifics

WHAT'S NEXT

- Produce synthesis report
- Identify a focused set of goals and actions
- Co-create partnership models with watershed leaders and the broader community







QUESTIONS?