

Why Do We Need Nature in Cities?

- In their research to identify factors that cause open areas to be favored or rejected, Swiss researchers found that our desire towards the natural world is both biological and cultural. Our programmed need to interact with nature appears both determined by our genes and what we learn as we grow and age.

Does Nature Need Cities?

- If conservation is to build the support it needs, it must energize young urban dwellers, who now make up most of the world. (The Nature Conservancy)





A scenic view of a lake in Chicago, likely Lake Michigan, with a dense line of green trees in the middle ground. In the background, the Chicago skyline is visible under a hazy sky. The foreground is filled with lush green plants and clusters of small pink flowers. A black fence is partially visible on the left side of the frame.

Chicago Wilderness

What is Green Infrastructure ??



GREENING *Infrastructure*

An Initiative of ChicagoWilderness



GREENING *Infrastructure*

An Initiative of ChicagoWilderness

- **Chicago Wilderness Definition:**
 - **Green Infrastructure – interconnected network of natural areas and open space that conserves ecosystem values and functions that sustain our society.**
 - **Connects across all SCALES of green infrastructure from site –specific practices to our regional plan.**



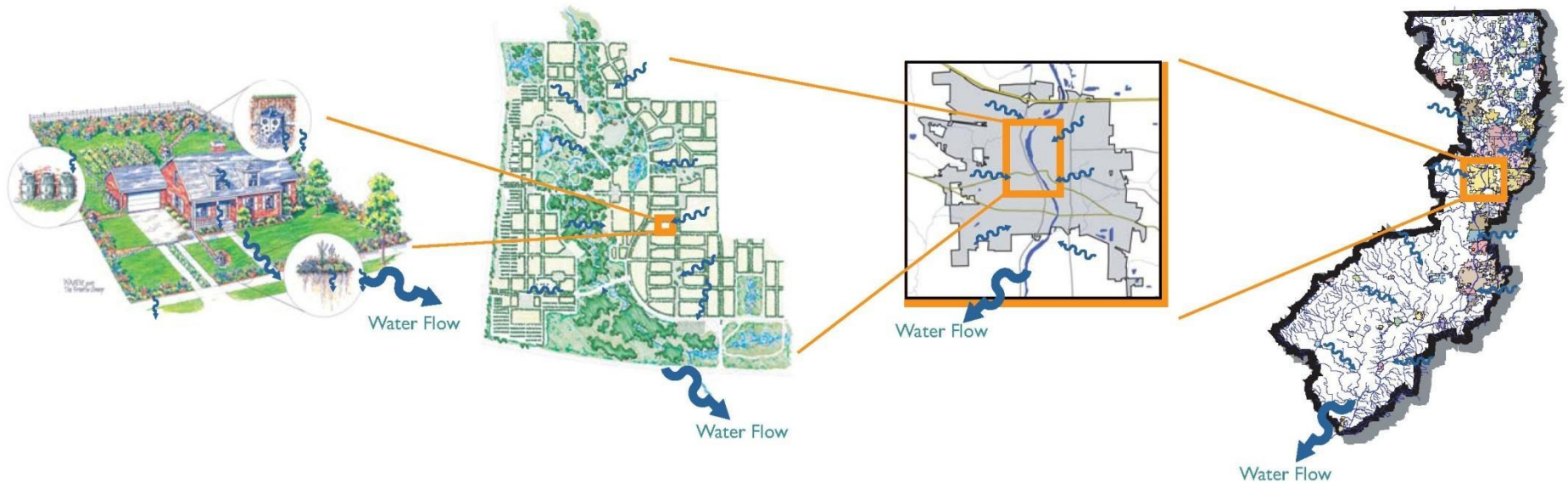
GREENING *Infrastructure*

An Initiative of Chicago Wilderness

Green Infrastructure at Four Scales

"The nation behaves well if it treats the natural resources as assets which it must turn over to the next generation increased, and not impaired in value."

- Theodore Roosevelt



Individual Building Lot Scale

Neighborhood or Campus Scale

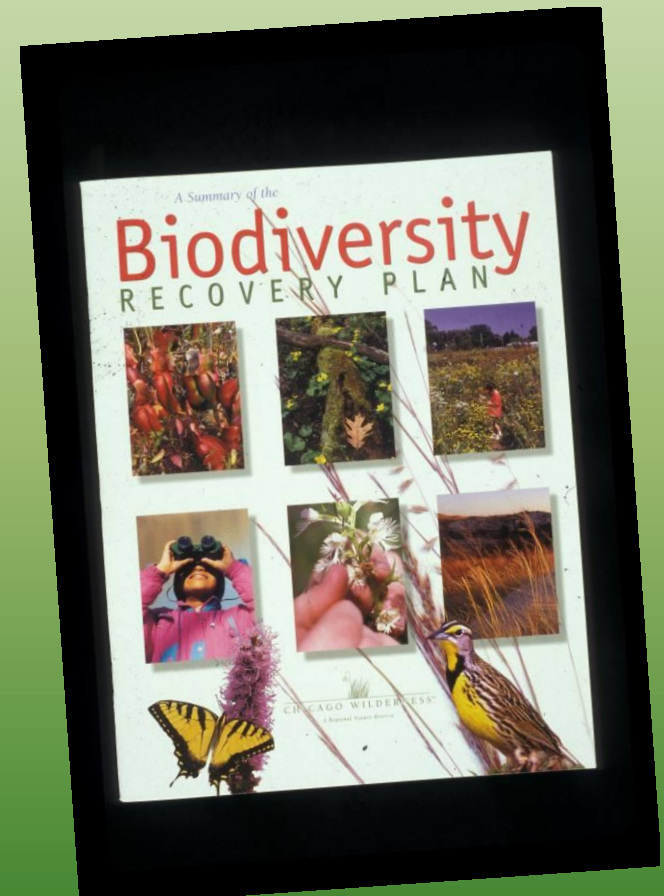
Municipal, Community, or County Scale

Watershed Scale



CW Original GIV Project Purpose

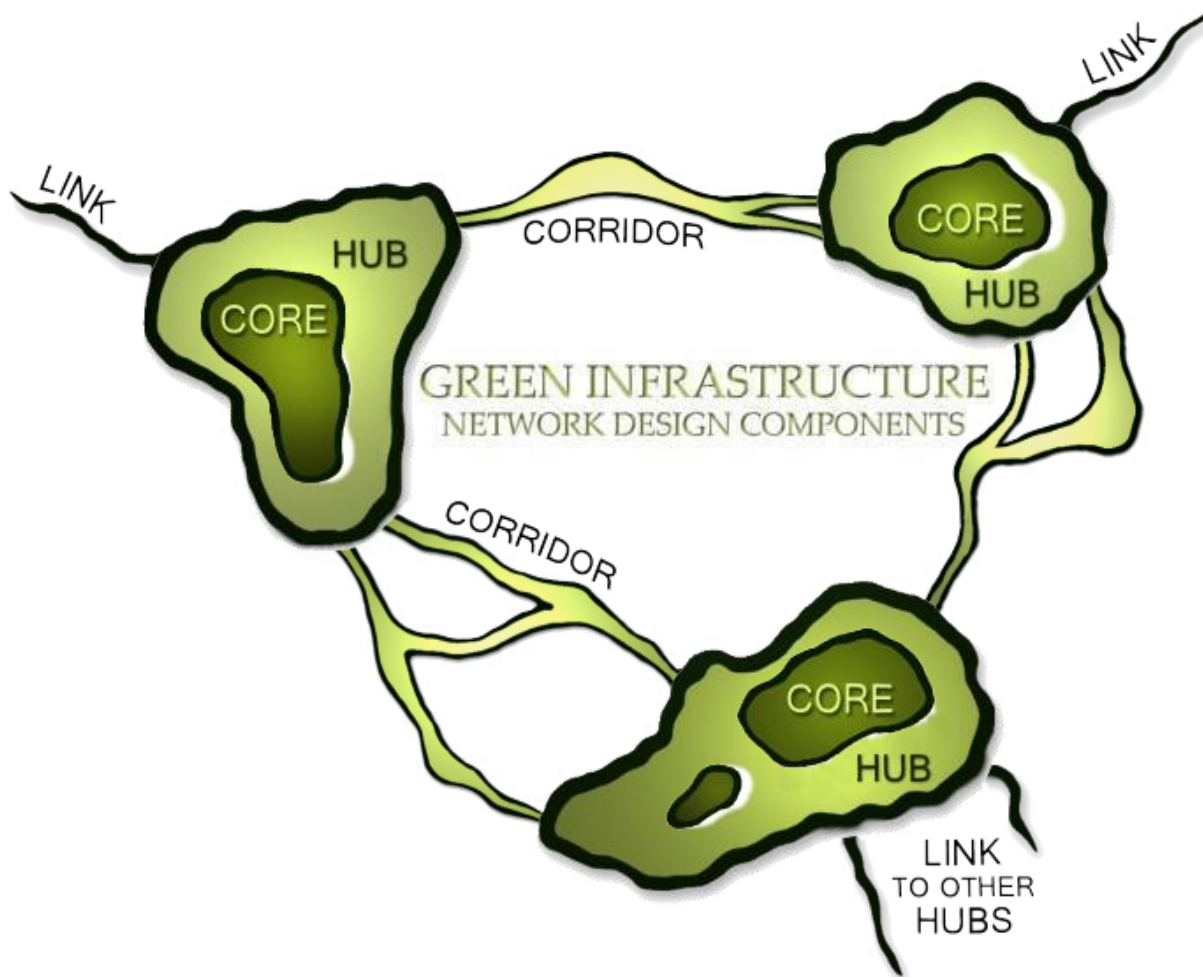
Develop a *tangible, green infrastructure vision* that reflected the goals and recommendations of the Biodiversity Recovery Plan.



GREENING *Infrastructure*

An Initiative of ChicagoWilderness

Design and Connect Network Features



Core Areas:

- Contain fully functional natural ecosystems
- Provide high-quality habitat for native plants and animals

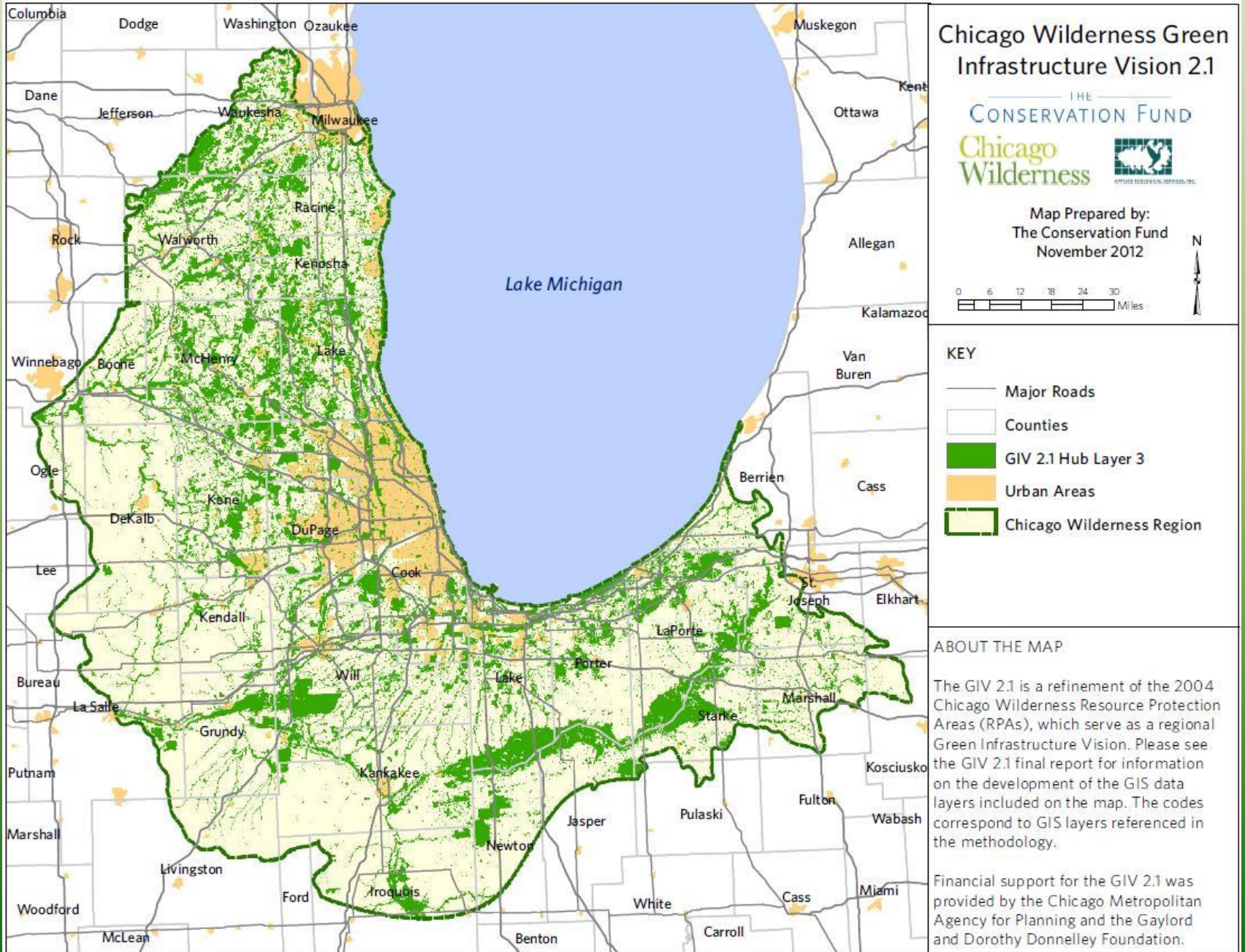
Hubs:

- Slightly fragmented aggregations of core areas, plus contiguous natural cover

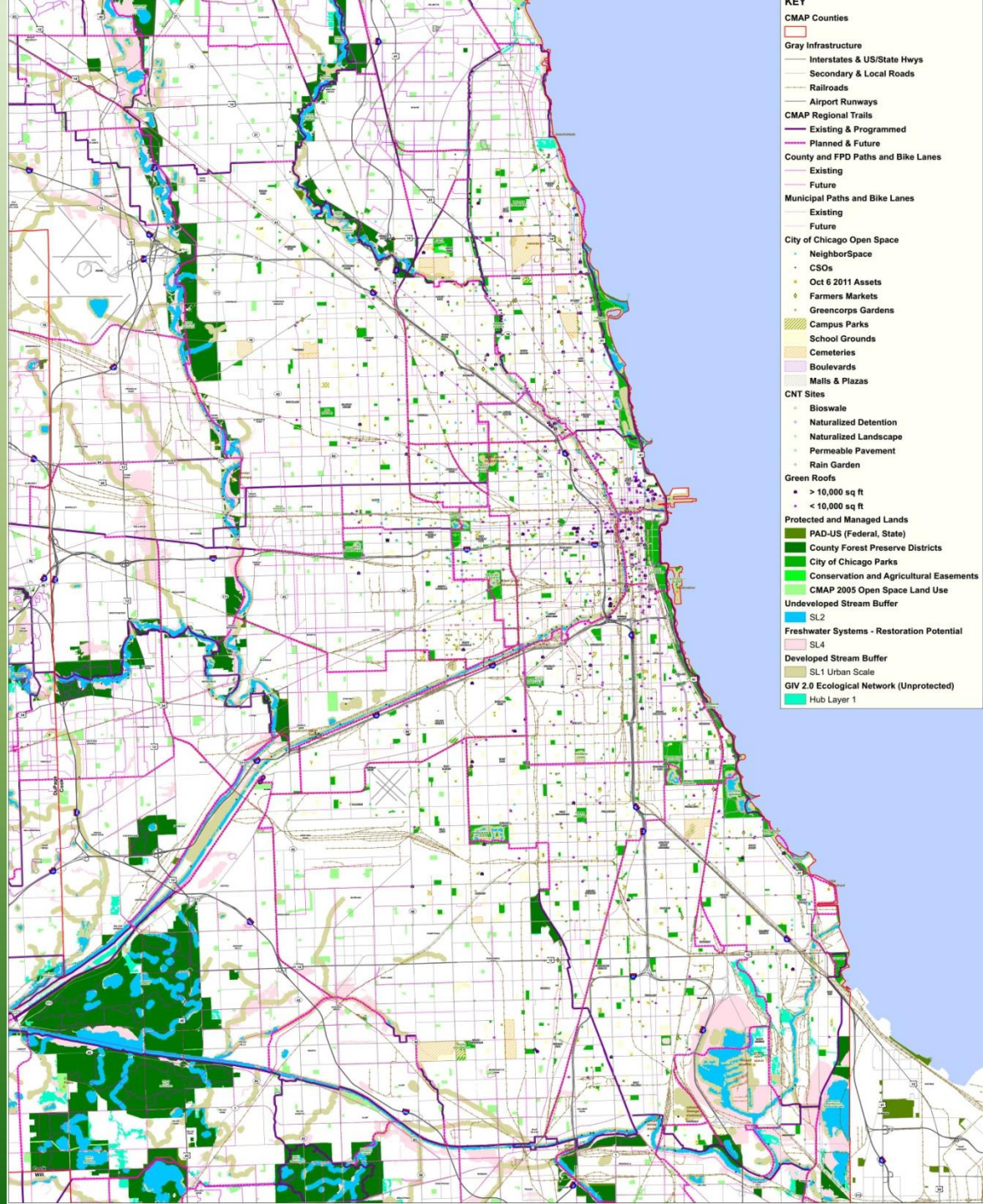
Corridors:

- Link core areas together
- Allow animal movement and seed and pollen transfer between core areas

GIV 2.1 Network Elements: GIV Composite



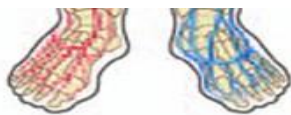
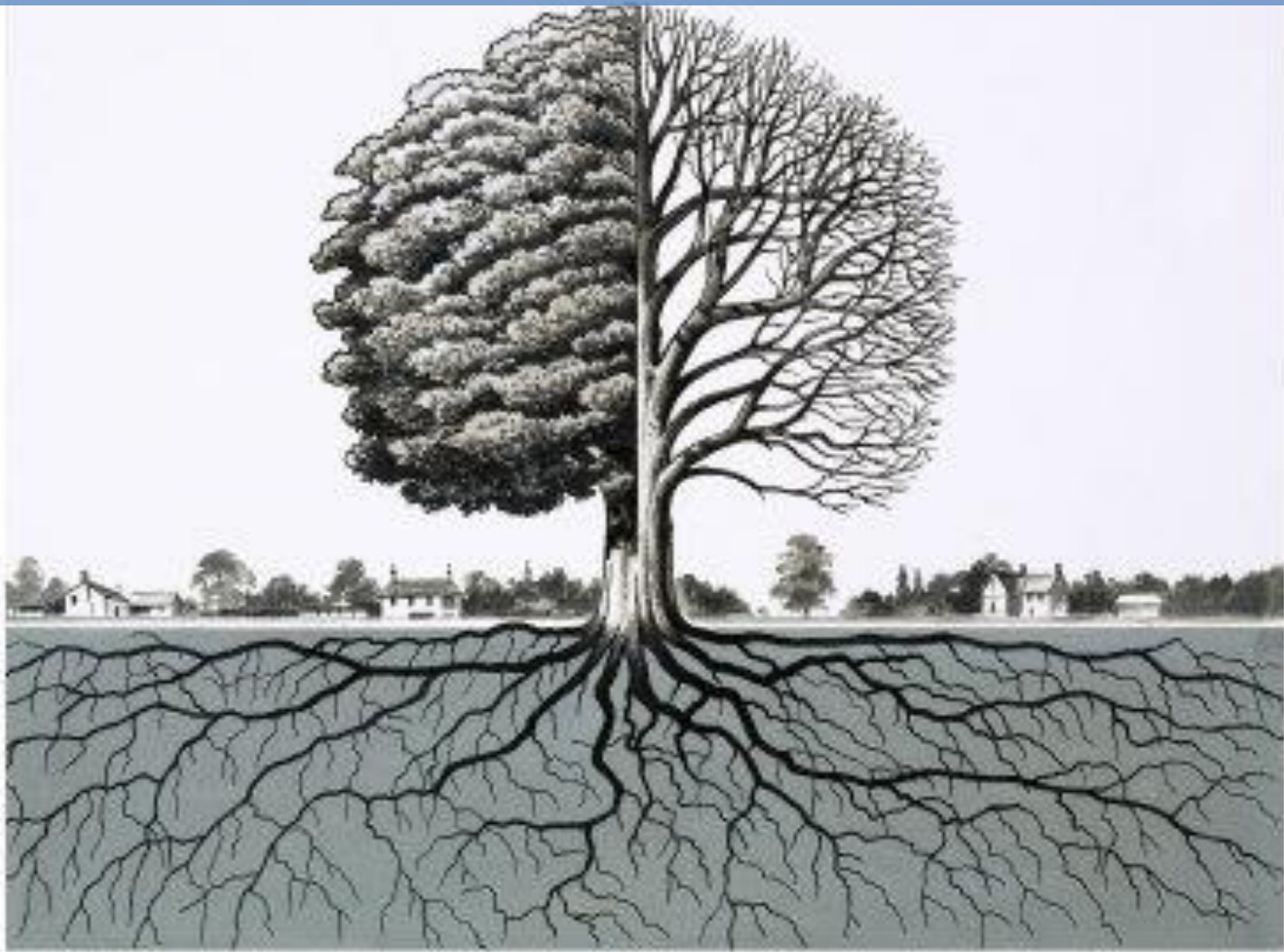
Urban Scale Green Infrastructure





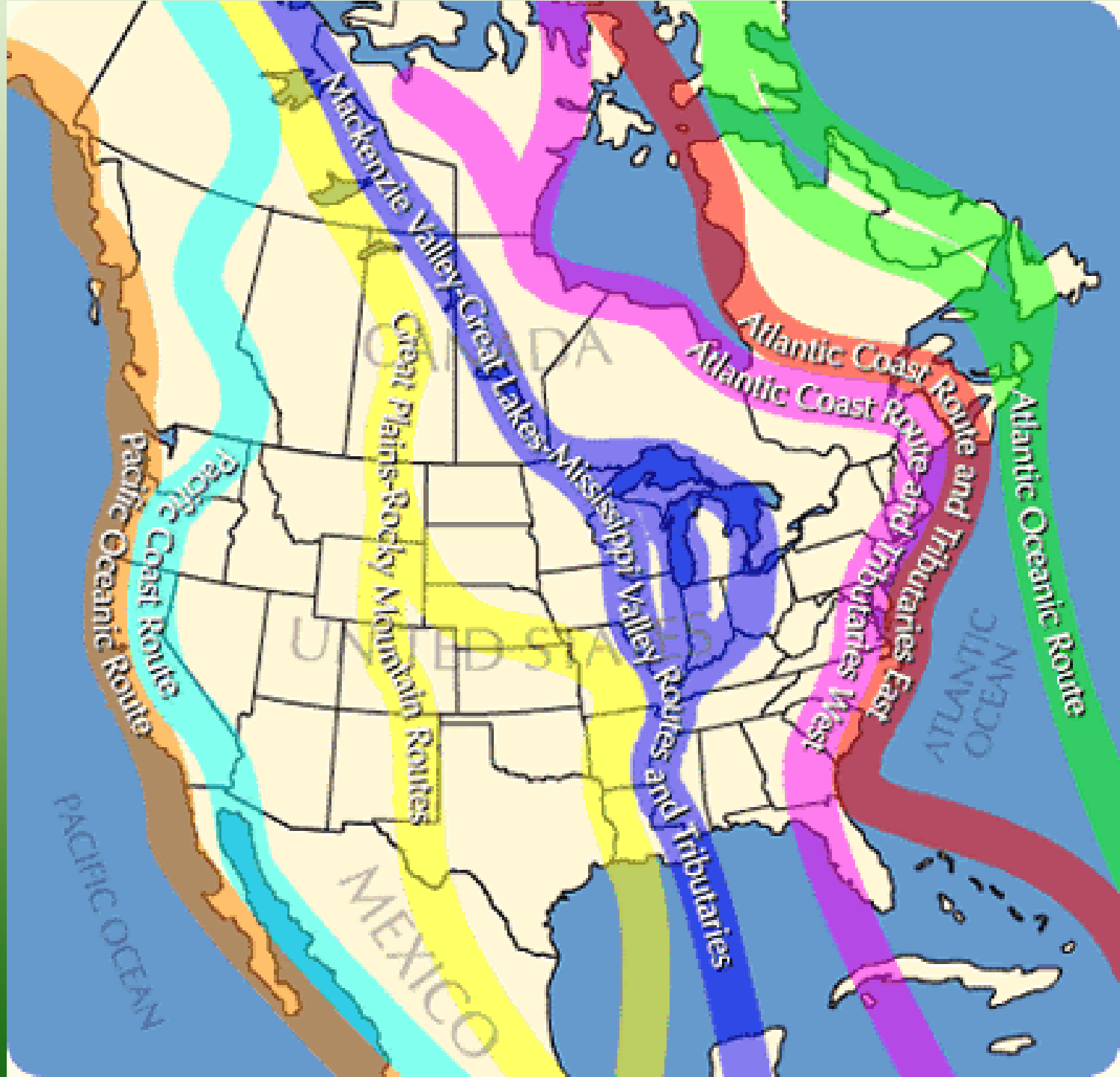
**Is this tree canopy important to migrating birds?
Does it help with air quality?
Does it intercept rainfall, reducing runoff?**

DOES IT MATTER IF ITS ALL CONNECTED?



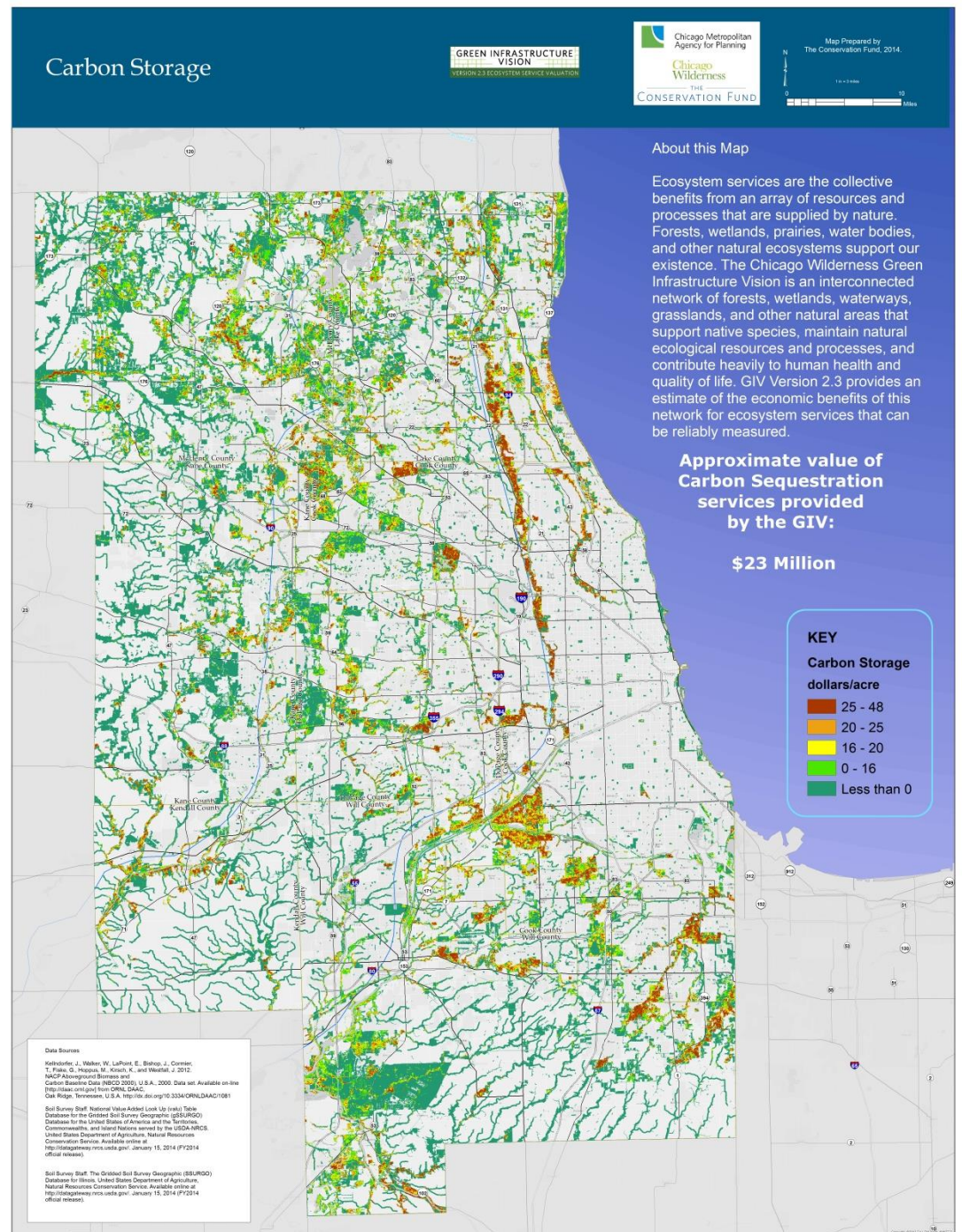


06.25.2011



Economic Valuation Study of GIV Network By CMAP The Conservation Fund, and Chicago Wilderness

- Flora and Fauna
- Recreation and Tourism
- Carbon Storage
- Flood Storage
- Groundwater Protection
- Water Purification



A group of people is gathered under several large, leafy trees on a sandy beach. The ocean is visible in the background under a clear blue sky. The scene is bright and sunny.

Questions

Jeffrey L. Mengler, Senior Project Scientist
jmengler@heyassoc.com
630-585-8022

Hey and Associates, Inc.
Engineering, Ecology and Landscape Architecture